

CABLE D-RING



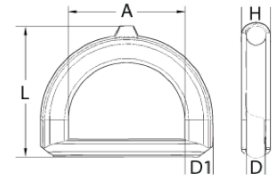
Technical Data

Casting material : Stainless Steel AIS316 – DIN 1.4401
 Surface treatment : " E.P. " (Electro polish)
 Breaking load : Standard safety factor for working load is 1/4 of "T.D.L." (Tested deformation load)

Cable D-Ring are made from cast 316 grade stainless steel.

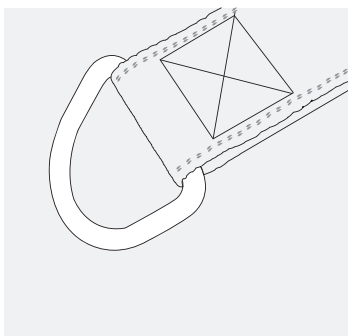
Field of Application

Cable D-Ring are designed to support wire rope on shade steel corners.



Product Code	Suits Wire (mm)	D (mm)	D1 (mm)	A (mm)	L (mm)	H (mm)	Breaking Load (kgs)
cabledring5	5	6	9	50	55	8	2,600
cabledring8	8	8	13	50	62	13	6,000
cabledring10	10	10	15	53	68	15	6,000

D - RING

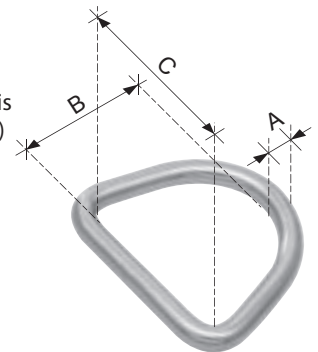


Technical Data

Forging material : Stainless Steel AISI304 - DIN 1.4301
 Surface treatment : " E.P. " (Electro polish)
 Breaking load : Standard safety factor for working load is 1/4 of "T.D.L." (Tested deformation load)

Field of Application

D-rings are designed for assembly of shade sail corners using webbing. Rings are welded using the TIG Argon welding process.



Product Code	Size (mm)	C (mm)	A (mm)	B (mm)	Breaking Load (kgs)
Dring640	6*40	39	6	34	1,800
Dring850	8*50	51	8	43	2,800

TURNBUCKLE JAW AND JAW

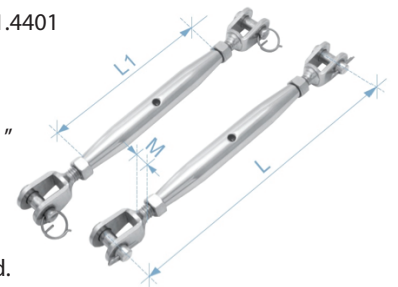


Technical Data

Forging material : Stainless Steel AISI316 - DIN 1.4401
 Frame : Casting
 Surface treatment : " E.P. " (Electro polish)
 Breaking load : Standard safety factor for working load is 1/4 of "T.D.L." (Tested deformation load)

Field of Application

Jaw to jaw turnbuckles with nut provide an extra locking function after the fittings are securely tightened.



Product Code	Size (mm)	L (mm)	L1 (mm)	M (mm)	Breaking Load (kgs)
Turnbuckjaw8	8	160	105	M8	2,200
Turnbuckjaw10	10	200	125	M10	3,450
Turnbuckjaw12	12	245	150	M12	5,000

THREADED FORK-END

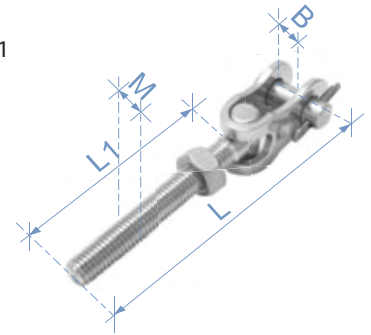


Technical Data

Forging material : Stainless Steel AISI316 – DIN 1.4401
 Frame : Casting
 Surface treatment : "E.P." (Electro polish)
 Breaking load : Standard safety factor for working load is 1/4 of "T.D.L." (Tested deformation load)

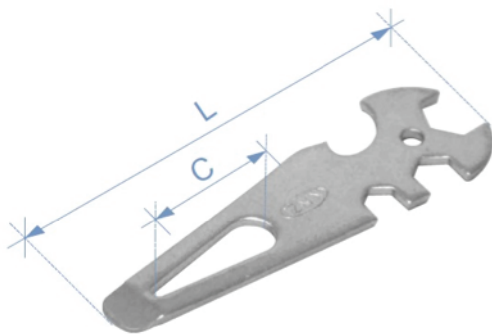
Field of Application

Threaded fork-ends are used for tensioning shade sail ends with additional benefit of 180° toggle head for ease of installation.



Product Code	M (mm)	L (mm)	L1 (mm)	B (mm)	Breaking Load (kgs)
Threaded fork 12	M12	265	225	12	5,000
Threaded fork 16	M16	285	225	16	8,000

SHACKLE KEY



Technical Data

Casting material : Stainless Steel AISI316 - DIN 1.4401
 Surface treatment : " E.P. " (Electro polish)
 Breaking load : Standard safety factor for working load is 1/4 of " T.D.L. " (Tested deformation load)

Field of Application

Shackle Key is used to tighten Turn Buckles and Nuts during installation.

Product Code	L (mm)	C (mm)
shackkey32100	100	32

Note: Standard safety factor for working load is 1/4 of breaking load.

CARE & MAINTENANCE PROGRAM

The common rule for keeping stainless steel in its original, pristine condition is to "clean it when it's dirty". For regular cleaning start with a soft cloth and clean warm water or use ordinary soap or a mild, diluted detergent or diluted ammonia in warm water; apply with a soft cloth or synthetic sponge. Rinse well, dry with a soft cloth or drip dry.

Occasionally the use of mild household cleaner, a fine synthetic scourer or a brush with nylon bristles may be used. Regular cleaning will often remove heavy soiling and accumulated staining.

SUGGESTIONS:

- Routine, simple and gentle cleaning
- Use only the above mentioned cleaning products
- Employ repeated routine cleaning rather than an aggressive single one

WHAT NOT TO DO:

- Do not use coarse abrasive powders
- Do not use metallic scourers
- Do not use "Silver cleaners"
- Do not subject stainless steel to "abnormal" use

Contact your dealer for more information.

POLYFAB MIDDLE EAST LLC
 info@polyfab.ae
 Tel +971 4 884 7933
 Fax +971 4 884 7934
 P.O. Box 450008, Dubai, UAE

